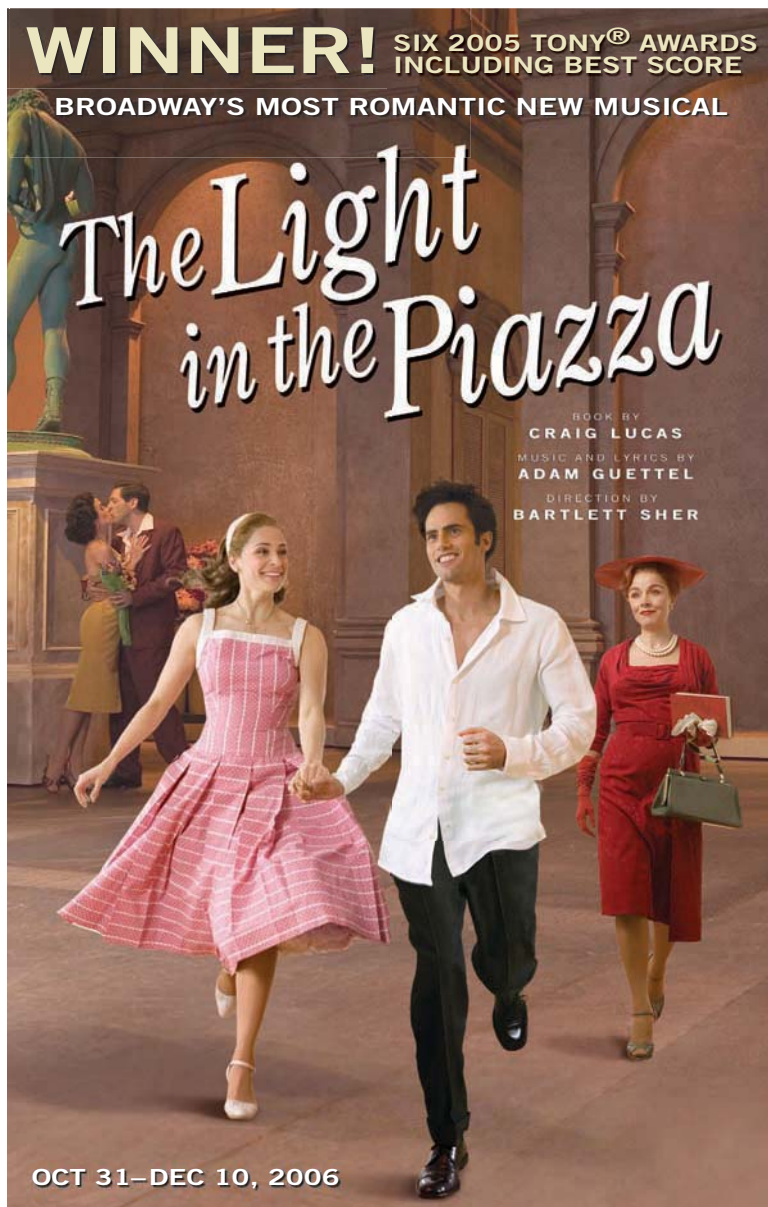


Project D.A.T.E. (Deaf Audience Theatre Experience)

Performances



Open Captioned performance on
Sunday, November 5, 2006 at 2pm

ASL interpreted performance on
Saturday, December 9, 2006 at 2pm

Tickets: \$45 (regularly \$85)

“Worth the trip for theatergoers looking for love in a Broadway musical.”

—New York Observer

A GUST OF WIND...A chance meeting...Love Begins This lush, dreamy musical finds Margaret Johnson touring the Tuscan countryside with her daughter, Clara. While sightseeing, Clara loses her hat in a sudden gust of wind and it lands at the feet of Fabrizio Naccarelli. Clara's unexpected and fateful encounter with the handsome young Florentine sparks an immediate and intense romance between the two. Be swept away to Italy where true love abounds in this contemporary, witty and elegant production.

American Sign language (ASL) interpreted performances with a pre-play discussion, one hour before, are available for patrons who are deaf or have severe hearing loss and who require sign language interpretation.

Open captioning performances are for patrons who are deaf or have severe hearing loss who don't use ASL. A scrolling LED screen allows patrons to read the dialogue, lyrics and sound effects during the performance.

To purchase tickets call 213.628.2772 or TTY: 213.680.4017 and mention PROJECT D.A.T.E.

For more information on Project D.A.T.E. and our upcoming seasons at the Mark Taper Forum and Kirk Douglas Theatre go to <http://projectdate.centertheatregroup.org>

Support for Project D.A.T.E. Program was provided by the Los Angeles County Arts Commission.



Ahmanson Theatre
at the Music Center

L.A.'s Theatre Company
135 N Grand Ave., Downtown L.A.
213.628.2772 CenterTheatreGroup.org